

CELL | ST™

Cell culture media
For better lives

CELLiST™ BASAL3 / BASAL3P

Shortcut to
Official Channel



CELLiST™ BASAL3 / BASAL3P

Overview

CELLiST™ BASAL3 is a high-performance growth medium specifically designed to support robust cell growth and viability in various CHO cell lines. This chemically defined medium, free from animal-derived components, ensures consistent and reliable results across different production batches. Leveraging Ajinomoto's extensive expertise in developing and manufacturing amino acids, CELLiST™ BASAL3 provides everything your CHO cell line needs for stable, high-yield protein production. Suitable for use with any CHO cell line, CELLiST™ BASAL3 offers a comprehensive solution for biopharmaceutical production with superior quality and reproducibility.



CELLiST™ BASAL3 Features	Benefits
Enriched with amino acids for enhanced cell growth.	Rapid cell proliferation, achieving higher cell densities faster.
Versatility across cell lines.	Compatible with a wide range CHO cell line, including CHO-K1, CHO-GS, CHO-S and their derivatives.
Chemically defined, protein-free medium with no animal-derived components.	Reduces risk of viral contamination, ensures batch consistency.
Supplied in fine powder form.	Easy to dissolve and allows for prolonged shelf life and ease of transportation.
Available in test samples and bulk sizes.	Flexibility according to usage requirements.
Suitable for batch, fed-batch, and perfusion cell cultures, at any scale.	Versatility across cell culture processes and scales.

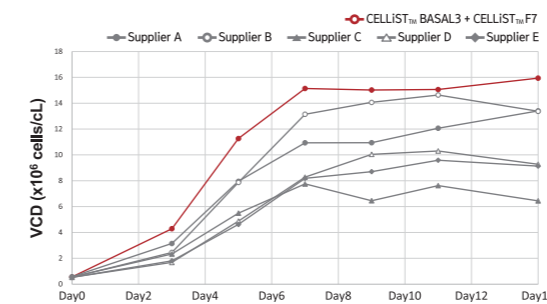
BASAL3 Product List

Product	Catalog No.	Specification	Amount	Packaging Information
BASAL3	AD1	-	27.0 g/L	1L / 50L
BASAL3P	AD3	Includes Poloxamer	28.0 g/L	1L / 50L

Cell Culture Performance

Comparative studies show superior culture growth and productivity with the CELLiST™ BASAL3 + CELLiST™ F7 media combination. In a fed-batch process using a CHO-K1 cell line expressing IgG1 antibody, our media outperforms top global competitors in viable cell density and IgG titer.

Cell Growth



Protein Production

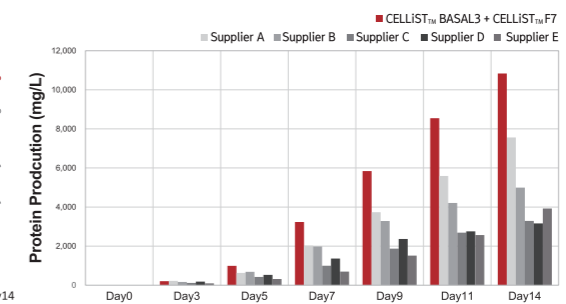
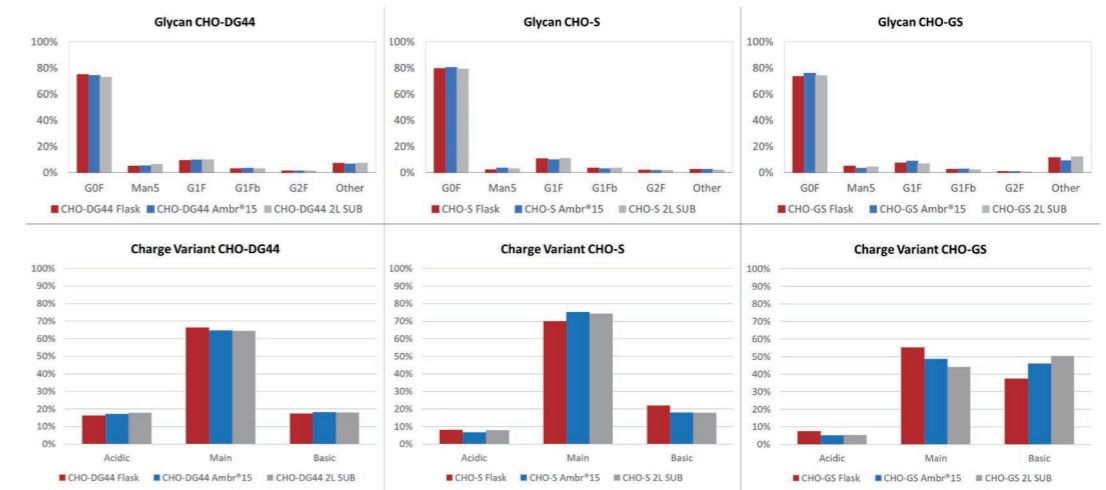


Figure 1: Fed-batch process was performed in an Ambr®15 microbioreactor system, using CHO-K1 cell line expressing IgG1 antibody. Feeding in CELLiST™ group was performed at a concentration of 6% (v/v) on day 3, 5, 7, 9 and 11.

'Supplier A, B, C, D and E' represent basal/feed media combinations from major media suppliers. Culture and feeding manners were performed according to each manufacturer's recommendations.

Protein Quality Across Different Scales

CELLiST™ media maintains consistent protein quality from flask to bioreactor scale. Our data indicates reliable protein quality, making scale-up processes straightforward and efficient. Fed-batch process was performed in 125 mL Erlenmeyer flasks, Ambr®15 microbioreactor system, and 2L single-use bioreactor system (Sartorius, BioStat® B), using CHO-DG44, CHO-S and CHO-GS cell lines expressing IgG1 antibody. Feeding was performed at a concentration of 6% (v/v) on day 4, 6, 8, 10 and 12.



Liquid Media Preparation

1) BASAL3 Liquid Reconstitution (1L)

1. Prepare a suitable container and stir bar (magnetic bar).
2. Fill the container with about 90% volume (900 mL) of cell culture-grade water (room temperature).
3. The total amount of this pouch (27.0 g) should be added to the container. Place a small amount of cell culture-grade water in the pouch to wash the remaining product into the container.
4. Add the necessary additives as listed below:

Product	Catalog No.	Amount	Required Additives
BASAL3	AD1	27.0 g/L	1.0 g/L Poloxamer + 1.8 g/L Sodium Bicarbonate
BASAL3P	AD3	28.0 g/L	1.8 g/L Sodium Bicarbonate

5. Mix using magnetic stirrer for 20 minutes (until all powder is dissolved).
6. Add cell culture-grade water to final volume of 1 L and mix the media for 10 minutes. Volume adjustments can also be done by weighing (see table above).
7. Check pH to ensure a proper range of 6.8-7.2. If out of range, adjust pH using HCl or NaOH solutions.
8. Filter the medium in a biosafety cabinet, using a membrane filter with pore size of 0.2 to 0.22 µm in diameter.
9. Store in a refrigerated (2–8°C), dark environment until use.
10. Right before use, add L-glutamine or AminoStable™ to the solution (2-6 mM final concentration is recommended). If required, add growth factors such as insulin or IGF-I.

2) Notes regarding cell passaging

- a. It is highly recommended to passage the cells at least 3 times in their original medium, prior to transferring into the new CELLiST™ Medium.
- b. To reduce the stress faced by cells due to media switch process, it may help to add growth factors such as insulin or IGF-I (for example, 50 µg/L of LONG®R³ IGF-I).
- c. Cell adaptation into a new medium is very much dependent on the cell line and original medium being used. If direct switch ('direct adaptation') of cells from their original media to CELLiST™ results in unusual low viability and slow cell growth, sequential adaptation may be required (see the following section).



Cell Adaptation Strategy

1) Direct Adaptation

Most CHO cell lines can undergo direct adaptation to CELLiST™ media as follows.

1. Determine the cell concentration and viability of the culture. Cells should be in logarithmic growth phase (usually Day 3-5) with a viability of >90% prior to inoculation into new medium.
2. Seed cells at 0.3-0.5 x 10⁶ viable cells/mL in sterile culture vessels containing pre-warmed complete CELLiST™ BASAL medium.
3. Incubate at 37°C in a humidified incubator at 5% CO₂ on an orbital shaker platform rotating at the desired RPM (e.g. 100-150 RPM).
4. Passage (subculture) cells every 3-4 days or when viable cell density reaches >1.0 x 10⁶ cells/mL. Seed cells at densities of 0.3-0.5 x 10⁶ viable cells/mL.

2) Sequential Adaptation

Sequential adaptation of CHO cells into CELLiST™ media can be a favorable solution for cell lines facing challenges with direct adaptation (for example, exhibiting very slow cell growth). It is recommended to use a higher seeding density during the adaptation period, approximately (~0.5 x 10⁶ cells/mL). This sequential adaptation method allows a gradual adaptation of the cells to the new medium, achieved by sequentially increasing the relative volume of the new medium. The three-step adaptation procedure (100:0 → 50:50 → 0:100; ratio between Original-to-CELLiST™ medium) may be sufficient in most cases. However, for sensitive cell lines, it is recommended to perform a 5-step adaptation procedure, as described below:

Ratio of Original vs. CELLiST™ medium	Seeding Density	Criteria for next stage
100:0	0.3-0.5 x 10 ⁶	Cell density 1-3 x 10 ⁶ ; Viability > 90%
75:25	0.3-0.5 x 10 ⁶	Cell density 1-3 x 10 ⁶ ; Viability > 90%
50:50	0.3-0.5 x 10 ⁶	Cell density 1-3 x 10 ⁶ ; Viability > 90%
25:75	0.3-0.5 x 10 ⁶	Cell density 1-3 x 10 ⁶ ; Viability > 90%
0:100	0.3-0.5 x 10 ⁶	Cell density 1-3 x 10 ⁶ ; Viability > 90%

Note: Some cell lines require addition of growth factor for proper growth. The addition of growth factors, such as Insulin or IGF-I, can help the adaptation process in these cases that show extremely poor initial cell growth.

3) Other Products

Products	Type	Features
CELLiST™ F7	Feed medium	High-performance, all-in-one feed media that easily dissolves and remains stable at neutral pH, thanks to Ajinomoto Group's unique cysteine-stabilization technology. This enhances cysteine availability, boosting performance and enabling hassle-free, single-agent feeding.
AminoSupplement Cys1	Feed medium supplement	Performance-enhancing supplement for any single-agent feed media, improving culture performance and stability with Ajinomoto Group's unique cysteine stabilization technology.
AminoSupplement Cys2	Feed medium supplement	Performance-enhancing supplement that eliminates the need for high-pH feeding in <u>dual-agent feed media</u> . Easily added at neutral pH, ensuring high stability and simplified processes.
Supplement Gly-L-Tyr	Feed medium supplement	Highly soluble tyrosine supplement that boosts tyrosine concentrations for any neutral pH feeding process, enhancing culture growth without solubility concerns.



Sales & Technical Support

For quoting, ordering, product sample request

CELLIST™ Sales Team

Tel: +82-032-210-2600

Mail: sales@ajinomotocellist.com

Global CELLIST Solution Centers



CELLIST | Solution Center Korea

70, Songdogwahak-ro, Yeonsu-gu, Incheon, Republic of Korea
Tel: +82-32-210-2695 Fax: +82-32-210-2604
Mail: yaron.silberberg.dk2@asv.ajinomoto.com

CELLIST | Solution Center India

2nd Floor, Block 05, TIMES CORPORATE PARK Thaltej, Ahmedabad, Gujarat 380058, India
Tel: +91-87359-10813
Mail: parshadg.hirapara.ut3@asv.ajinomoto.com

CELLIST | Solution Center China

Room 501, Building 9, NO.185 Jiangnan East Road, Songjiang District, Shanghai, China
Tel: +86-21-6219-2705
Mail: mingqi_fan@ajinomoto.com.cn



Eat Well, Live Well.



www.ajinomotocellistkorea.com